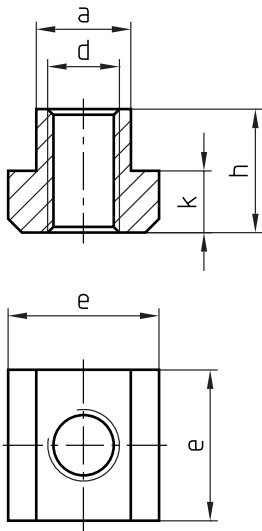
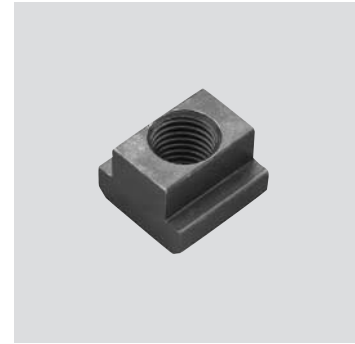


Z285/... (V5310/...)

Mat.: 10.9/1000 N/mm<sup>2</sup>  
DIN 508

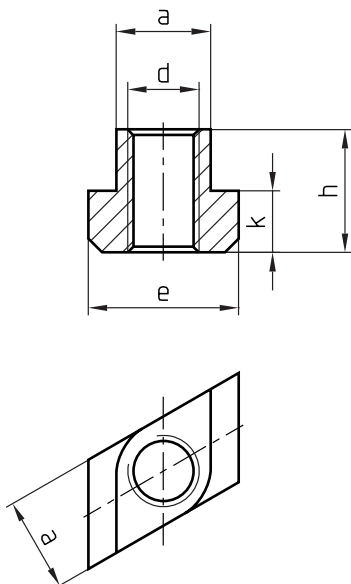


e	h	k	$\frac{-a}{h}$	d	Nr./No.
10	8	4	<b>6</b>	<b>M 5</b>	Z285/ 6x 5
13	10	6	<b>8</b>	<b>M 6</b>	8x 6
15	12		<b>10</b>	<b>M 8</b>	10x 8
18	14	7	<b>12</b>	<b>M10</b>	12x10
22	16	8	<b>14</b>	<b>M12</b>	14x12

e	h	k	$\frac{-a}{h}$	d	Nr./No.
25	18	9	<b>16</b>	<b>M14</b>	Z285/16x14
28	20	10	<b>18</b>	<b>M16</b>	18x16
35	28	14	<b>22</b>	<b>M20</b>	22x20
44	36	18	<b>28</b>	<b>M24</b>	28x24
54	44	22	<b>36</b>	<b>M30</b>	36x30

Z286/... (V5325/...)

Mat.: 10.9/1000 N/mm<sup>2</sup>



e	h	k	$\frac{-a}{h}$	d	Nr./No.
18	14	7	<b>12</b>	<b>M10</b>	Z286/12x10
22	16	8	<b>14</b>	<b>M12</b>	14x12
25	18	9	<b>16</b>	<b>M14</b>	16x14

e	h	k	$\frac{-a}{h}$	d	Nr./No.
28	20	10	<b>18</b>	<b>M16</b>	Z286/18x16
35	28	14	<b>22</b>	<b>M20</b>	22x20
44	36	18	<b>28</b>	<b>M24</b>	28x24

This is trial version  
www.adultpdf.com